



drylin® Accessories - control elements

Accessories for manual positioning and format adjustment

Stepper and DC motors

Couplings and motor flanges

Cables and proximity sensors

Assembly and fastening options



drylin® drive technology accessories | Product overview

drylin® accessories - control elements



Angular drives,
flexible positioning

► Page 1708



Angular drive
for heavy duty

► Page 1709



Hygienic design
angular drive

► Page 1709



Position indicator

► Page 1710

drylin® accessories - electrical



Stepper motors

► Page 1720



EC motors with Hall sensor
and encoder

► Page 1724



Planetary gear for
stepper motors

► Page 1725



DC motors
with spur gear

► Page 1726

drylin® accessories - electrical



Proximity switches: Limit
and reference switches

► Page 1733



Proximity switches –
kit with support

► Page 1734



Spacer for height
adjustment:
SLW/SHT linear modules

► Page 1736



Mounting bracket

► Page 1737

drylin® accessories - electrical



Adapter plate

► Page 1742



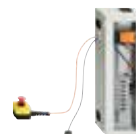
Stainless steel
angle kit

► Page 1743



Accessories for
linear robot drives

► Page 1744



Modular control
and software

► Page 1745



Lead screw clamps

► Page 1712



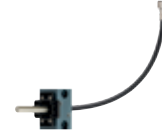
Hand wheel

► Page 1713



Flexshafts

► Page 1714



Flexshaft incl. remote control unit:
SHT-ROU

► Page 1715



Protective cover for DC motors

► Page 1727



Couplings

► Page 1730



Motor flanges

► Page 1731



Cables for stepper motors

► Page 1732

roboLink® – Apiro®



Adapter kit for linear robot setup

► Page 1738



T-slot plate

► Page 1739



Slot nuts for mounting

► Page 1740



Clamps

► Page 1741

roboLink® – Apiro®



Motor control:
Stepper motors
D1 dryve

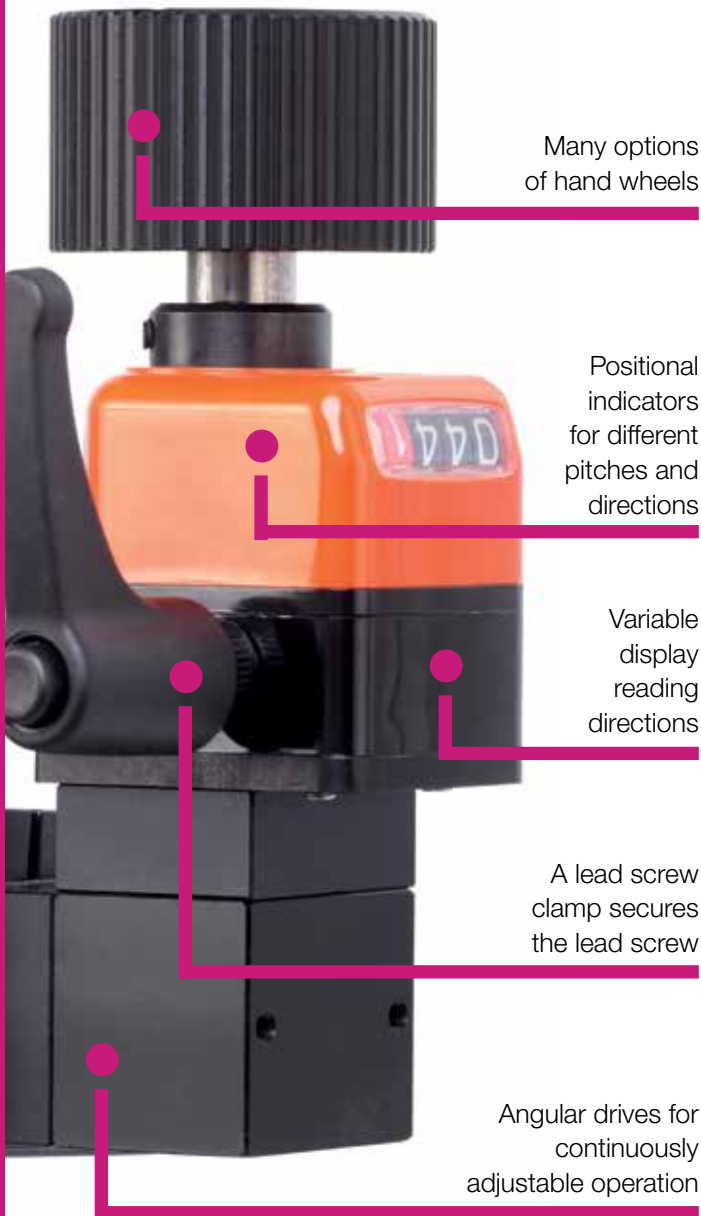
► Page 1746



Motor control:
DC motors
D3 dryve

► Page 1747

Secure, reproduce and turn



Accessories for drylin® drive technology – manual positioning

An extensive range of accessories is available for many drylin® drive units to perform manual adjustments quickly and conveniently. When directly configuring the linear unit with the order, the units are shipped completely assembled. Any subsequent reconfiguration may result in the lead screw having to be exchanged because the lead screw ends may be too short.

- Fast and precise positioning
- Ergonomic operation
- Provides a mechanical brake



Available from stock

Detailed information about delivery time online.



Price breaks online

No minimum order value.
No minimum order quantity.

Manual operation, manual positioning



Angular drive

- 360° continuously adjustable
- Angle can be fixed and set by clamp
- Small flange saves installation space

► Page 1708



Position indicator

- Direct read-out of the carriage position for the lead screw drives
- Bore reducers included to enable fitting to the entire product

► Page 1710



Lead screw clamp

- Provides a mechanical brake to the lead screw
- Material: Plastic housing with aluminum shaft clamp

► Page 1712



Mounting plate for clamp/position indicator

- Position indicator and/or lead screw clamp
- Suitable for linear modules of SHT/SLW/SHTP series
- Material: plastic igumid G

► Page 1742



Hand wheels

- Thumbscrews and hand wheels available
- Different outer diameters available
- Different handles available

► Page 1713



Flexshaft incl. remote control unit

- Optional flexible operation of the drylin® linear modules
- Available in length 300, 500 and 1,000mm
- Can be combined with other accessories

► Page 1715

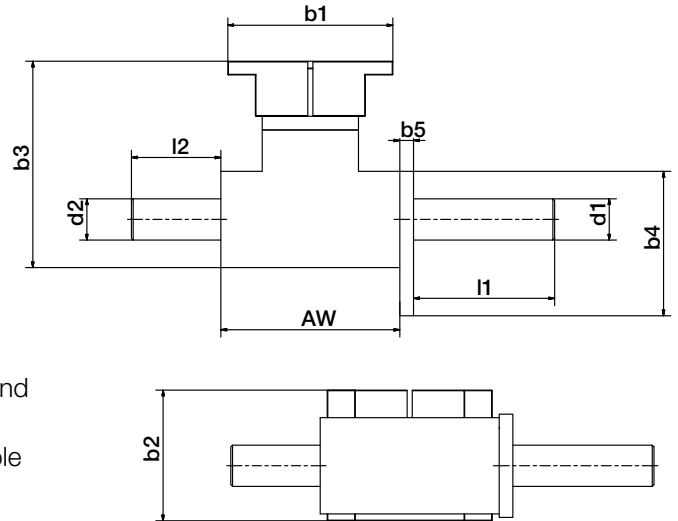
drylin® drive technology | Accessories | Product range

Angular drives - flexible and adjustable

In addition to safety technology aspects, limited operating space requires drylin® drives to be operated with flexibility and ease. We provide a product range of continuously adjustable angular drives for adjustment options from a defined direction. For manual adjustments, the angular drives can also be configured with position indicator, clamp and hand wheel, and are shipped pre-assembled. Angular drives with keyed/grooved shafts are available for motor interfaces with increased torque transfers.



- Double-side shaft output for angular drives WT-3 and WT-4
 - For rotary transmissions of 90°
 - Configuration with lead screw clamping/position indicator/hand wheel possible
 - Position indicator, lead screw clamp and hand wheel available
- Page 1710



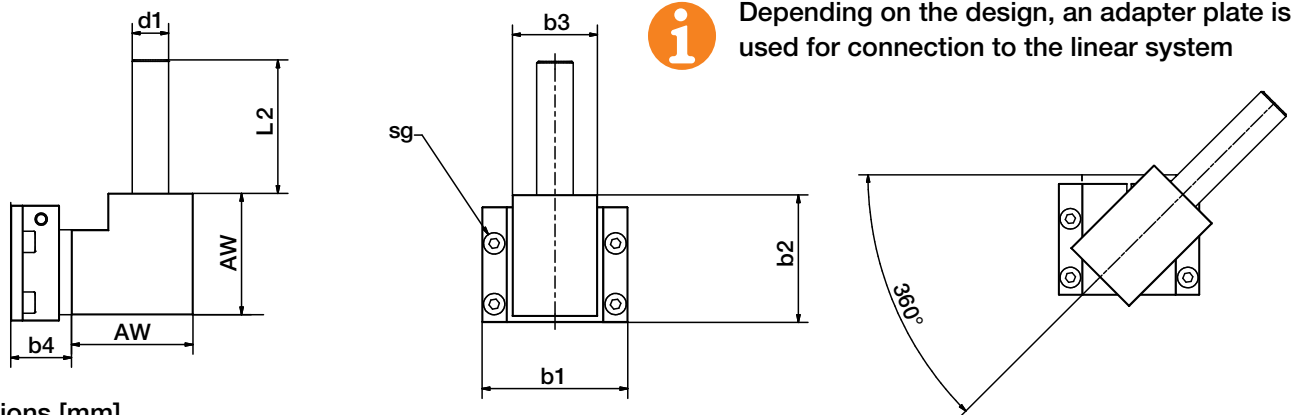
Dimensions [mm]

Part No.	M max. [N]	i ⁽¹⁰⁵⁾	AW	d1	d2	l1	l2	b1	b2	b3	b4	b5
WT-3000-T	3	01:01	52	12	12	26 / 41 / 59 / 74	26	48	38	60	42	4
WT-4000-T	6	01:01	60	14	14	26 / 47 / 65 / 80	26	56	46	83	50	10

¹⁰⁵⁾ Gear ratio



- Flexible adjusting to your installation with continuously variable adjustment (can be oscillated 360°)
- Max. drive torque 3Nm
- Clamping using set screw
- Ø 12mm h7 output shaft



Depending on the design, an adapter plate is used for connection to the linear system

Dimensions [mm]

Part No.	i ⁽¹⁰⁵⁾	AW	b1	b2	b3	b4	L2	d1	sg
WT-3000 3100 3500	1:1	40	48	42	28	20	26	12	M4
WT-3600 3700	1:1	40	48	42	28	30	26	12	M4

¹⁰⁵⁾ Gear ratio



drylin® angular drives provide for a maximum of positioning flexibility. The form fitting connection can give a maximum torque of up to 6Nm.

- Flexible adjusting to your installation with continuously variable adjustment (can be oscillated 360°)
- Max. drive torque 6Nm through coupling
- Fixed using feather key groove
- Input shaft Ø 14mm h7 with size
- Compatible with drylin® SHT/SHTC/SLW (sizes 16, 20 and 30)
- Position indicator, lead screw clamp and hand wheel available ► **Page 1710**

Dimensions [mm]

Part No.	¹⁰⁵⁾	AW	b1	b2	b3	b4	L2	d1	sg
WT-4000 4100 4200 4700	1:1	60	52	51	40	23	26	14	M4
WT-4600	1:1	60	52	51	40	33	26	14	M4

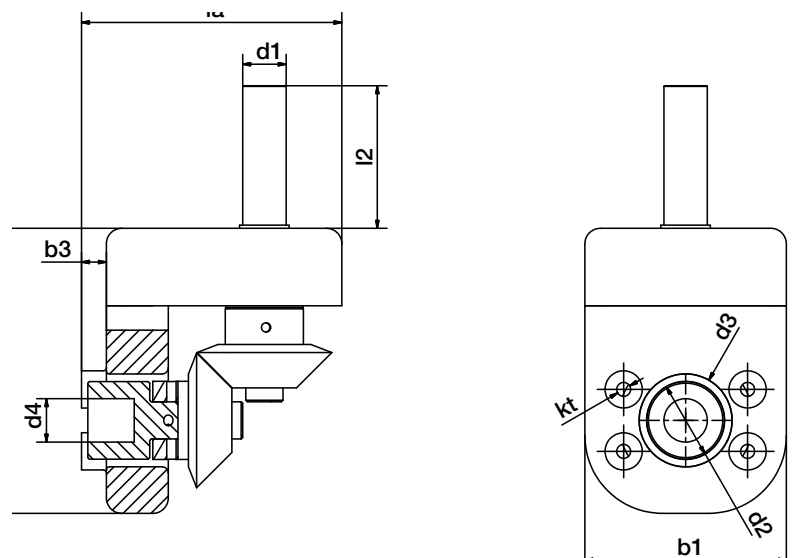
¹⁰⁵⁾ Gear ratio



Angular drive with hand wheel (optional)

Following the idea of "Hygienic Design" the angular drive is available as maintenance-free and washable stainless steel/polymer system.

- Max. drive torque 3Nm
- Single parts made of stainless steel
- Easy to clean/rinse with water
- Compatible with drylin® SHTC-20-EWM-HYD ► **Page 1507**
- Position indicator, lead screw clamp and hand wheel available ► **Page 1710**



Dimensions [mm]

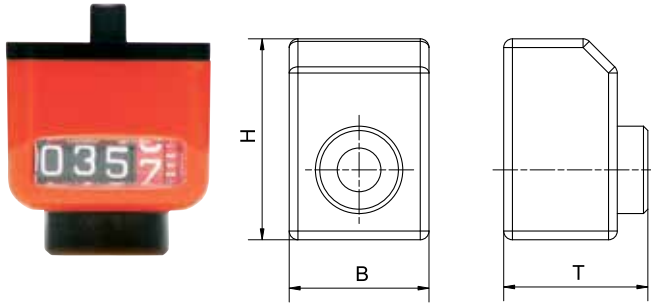
Part No.	¹⁰⁵⁾	la	kt	b1	b2	b3	d4	l2	d1	d2	d3	sg
WT-1100	1:1	84	4.5	65	92	8	12	26	14	25	30	M4

¹⁰⁵⁾ Gear ratio

drylin® drive technology | Accessories | Product range

Position indicator – safe reproducibility

To keep downtime to a minimum and make adjustments quickly and precisely, the indicator is used to create repeatable values. These can be shipped from stock for almost any linear unit in the matching pitch, in the required counting and viewing direction and in a variety of colors.



- Plastic analogue indicator for adjustment and direct reading of carriage position
- 3- (P1), 4- (P3) or 5- (P6) digit counter (red digit indicates tenths)
- Can be combined with manual clamps and hand wheels
- Reduction sleeves included
- Suitable adapter plate available ► **Page 1742**

Installation options



Display orientation



Dimensions [mm]

Position indicator	H	B	T
SHT-P1	33	22	26.0
SHT-P3	46	32	33.0
SHT-P6	66	48	50.5

Technical data [mm]

Position indicator	Digits	Decimal places	ID hollow shaft ∅	Reduction sleeves ∅
SHT-P1	3	1	8	6 + 6.35
SHT-P3	4	1	14	10 + 12.00
SHT-P6	5	1	20	14 + 16.00

Order key

Order example

SHT-P3-A-1.50-1-DX-O-F-ES

Standard	Installation size	Display orientation	Pitch	Decimal places	Direction of rotation	Housing colour	Material	Material
----------	-------------------	---------------------	-------	----------------	-----------------------	----------------	----------	----------

Options:

Display orientation
A = Display orientation
0°

B = Display orientation 180°
(optional)

Pitch
< 10.00 = One decimal place
> 10.00 = No decimal place

Decimal places
1 = One decimal place
(red digit)
0 = No decimal place

Direction of rotation

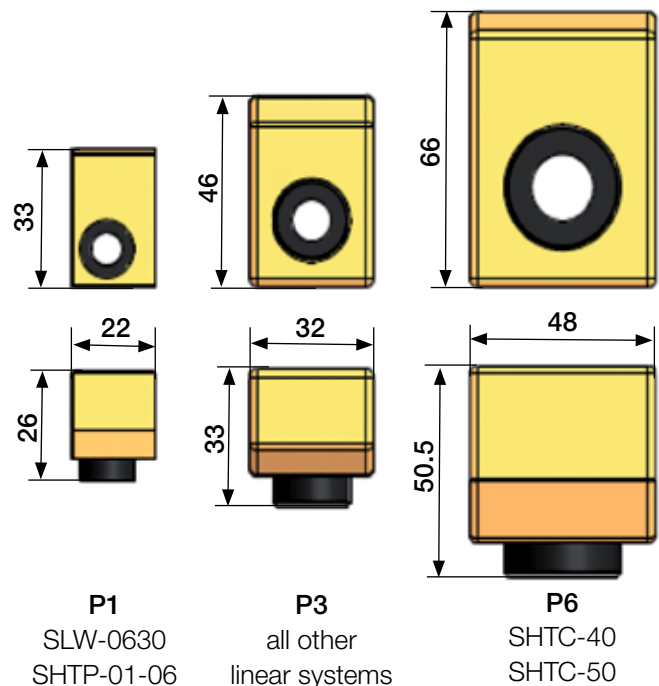
DX = Clockwise
SX = Anti clockwise

Housing color

O = Orange

Material

ES = Hollow stainless steel
shaft (optional)



Digital position indicator for even more exact settings



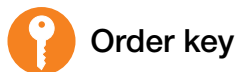
The electronic position indicator (battery operated) for drylin® linear modules can be programmed by the factory for the customer-specified lead/pitch of the screw. Ideal for use with dryspin® high helix lead screws. LCD display with 5 digits and special characters, long battery life and easy battery change without removal of the device.

- Electronic digital display
- 5-digit LCD display
- Features such as incremental adjustment, offset and reset, operated via keys on the position indicator
- Battery life 8 years
- Battery change without any tools
- Increase counting in either direction, clockwise or anti-clockwise
- Display orientation standard or through 180°

Note: reduction sleeves included in delivery

Technical data

Part No.	Speed [rpm]	Weight [g]	Temperature [°F]	Protection class
SHT-P3-E02-2.00-1-DX-O-S	600	60	+14 ... +140	IP51



Order key

Order example

SHT-P3-E02-2.00-1-DX-O-S



Options:

Display orientation

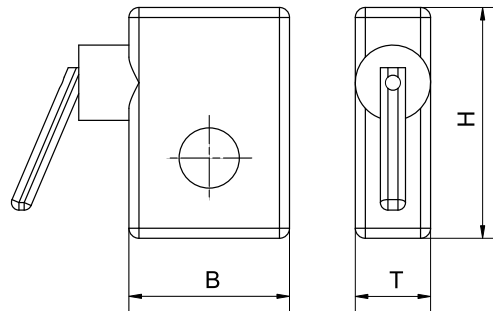
E02 = Standard: Display orientation 0°

E04 = Display orientation rotated by 180°

Linear modules with trapezoidal threads are equipped with a self-locking mechanism. Many applications call for an additional clamping option as an additional safeguard against unintentional movement.



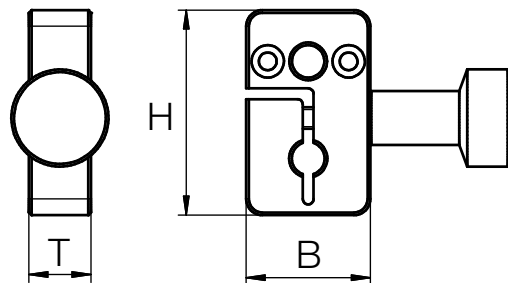
- Shaft clamping flange for attachment to the position indicator and subsequent mounting on the lead screw
- Provides a mechanical brake to the lead screw
- Material: plastic housing with aluminum shaft clamp
- Reduction sleeves for further diameters available



Assembly and positioning with adapter plate
► Page 1742

Dimensions [mm]

Part No.	SHT-HK-12	SHT-HK-16	SHT-HK-20	SHT-HK-30
Lead screw size	10	14	12	14
Dimensions (B x H x T)	32 x 46 x 15	32 x 46 x 15	32 x 46 x 15	32 x 46 x 15



Dimensions [mm]

Part No.	SHT-HK-06	SHT-HK-06,35	SHT-HK-08
Lead screw size	6	6.35	8
Dimensions (B x H x T)	23 x 38 x 11.5	23 x 38 x 11.5	23 x 38 x 11.5

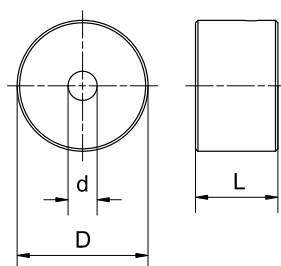
Hand wheels for drylin® linear modules

We have an extensive selection of hand wheels available to ship from stock for the most varied requirements. These range from small compact sizes up to Ø 125 with/without handle, and in various configurations.



Standard

With handle (optional)

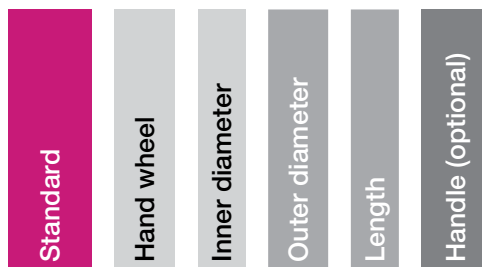


- Rotary knob: Defined standard for complete units
- Different outer diameters available
- Different handles available

Order key

Order example

SHT-HR- 8 - 27 -17-OG



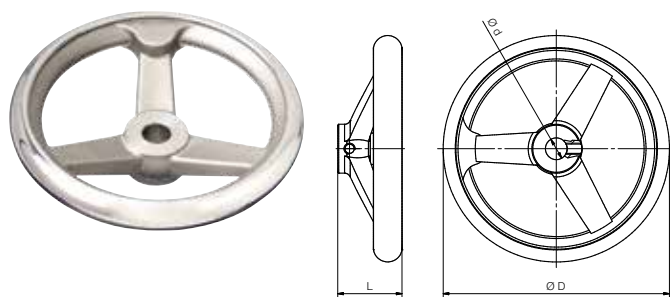
Options:
 Handle (optional)
 OG = Without handle
 FG = Fixed handle
 UG = Folding handle
 SG = Security handle

Dimensions [mm]

d	D	L	OG	FG	UG	SG ¹⁰⁴⁾
4	22	15	●	–	–	–
5	22	15	●	–	–	–
8	27	17	●	–	–	–
10	27	17	●	–	–	–
12	42	23	●	–	–	–
14	42	23	●	–	–	–
6	50	52	–	●	–	–

d	D	L	OG	FG	UG	SG ¹⁰⁴⁾
8	80	75	–	●	●	●
10	80	75	–	●	●	●
12	80	75	–	●	●	●
12	125	109	–	●	●	●
14	125	109	–	●	●	●
16	125	109	–	●	●	●
20	198	141	–	●	–	–

¹⁰⁴⁾ The automatic panning will return on release



Stainless steel hand wheel

- Designed for application in food and pharmaceutical industries
- Corrosion-free stainless steel

Dimensions [mm]

Part No.	d	D	L	OG	Weight [g]
SHT-HR-12-125-36-OG-ES	12	125	36	●	625

drylin® drive technology | Accessories | Product range

Flexshaft – separately located control of linear modules

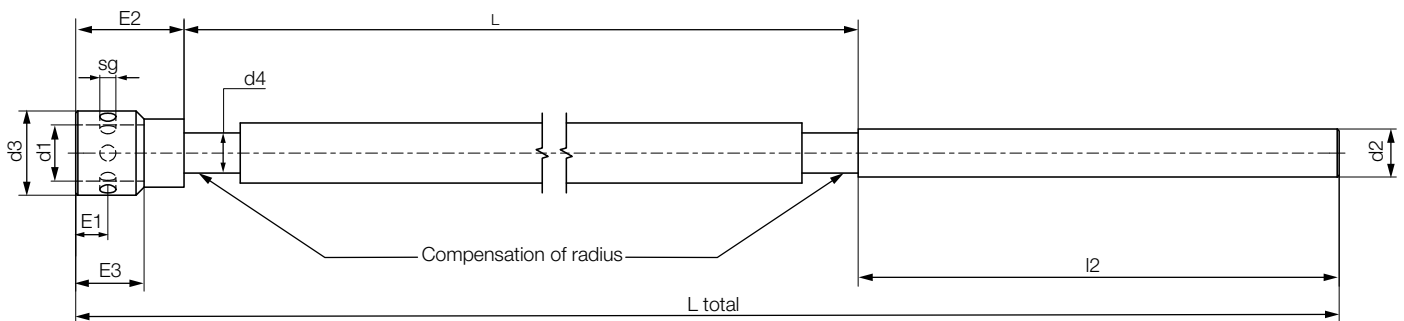
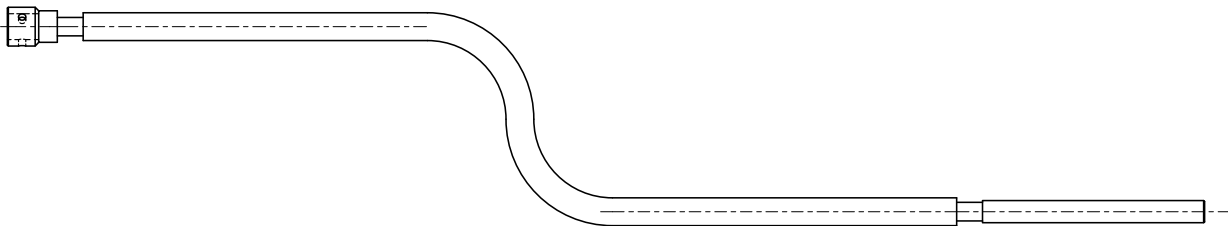


The flexshaft enables the positioning of the hand wheel independent of the installation position of the linear unit. Distance up to 500mm and offset by 85°.

- Lengths: 300mm, 500mm and 1,000mm (flexible area)
- Flexible shaft: Burnished steel
- Plastic coated: Rilsan
- Connection piece: Stainless steel AISI 303
- For all journal diameters (10, 12 and 14mm)
- Flexible installation
- Space-saving
- Can be combined with a lead screw support block
- ▶ **Page 1522**
- Position indicator, lead screw clamp and hand wheel available ▶ **Page 1710**



Example of the function of an offset operating unit



Dimensions [mm]

Part No.	d1	d2	d3	d4	l2	sg	E1	E2	E3	L	L Total	L max.	T max. [Nm]	Min. bend radius
FS-06-500-Z12X120-AA	14h7	12h7	21	6	120	M4	8.5	36.5	14.5	500	657	1,000	3	70
FS-08-1000-Z12X120-AA	14h7	12h7	21	8	120	M4	8.5	36.5	14.5	1,000	1,157	1,000	4.5	90

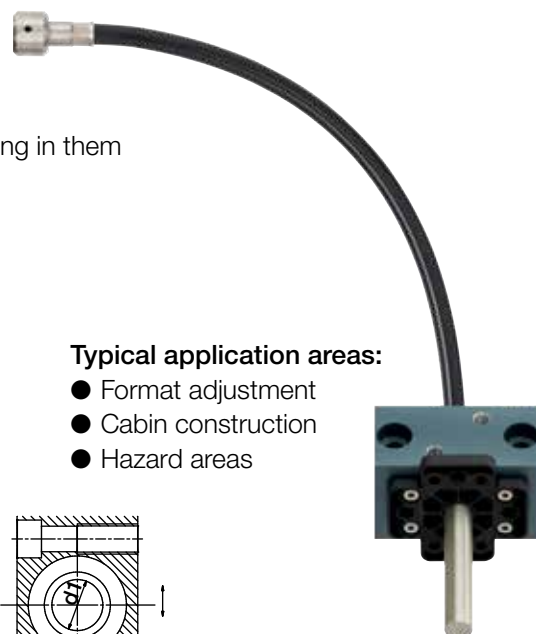


More dimensions upon request

With the drylin® Remote Operation Unit ROU, linear modules can be controlled remotely

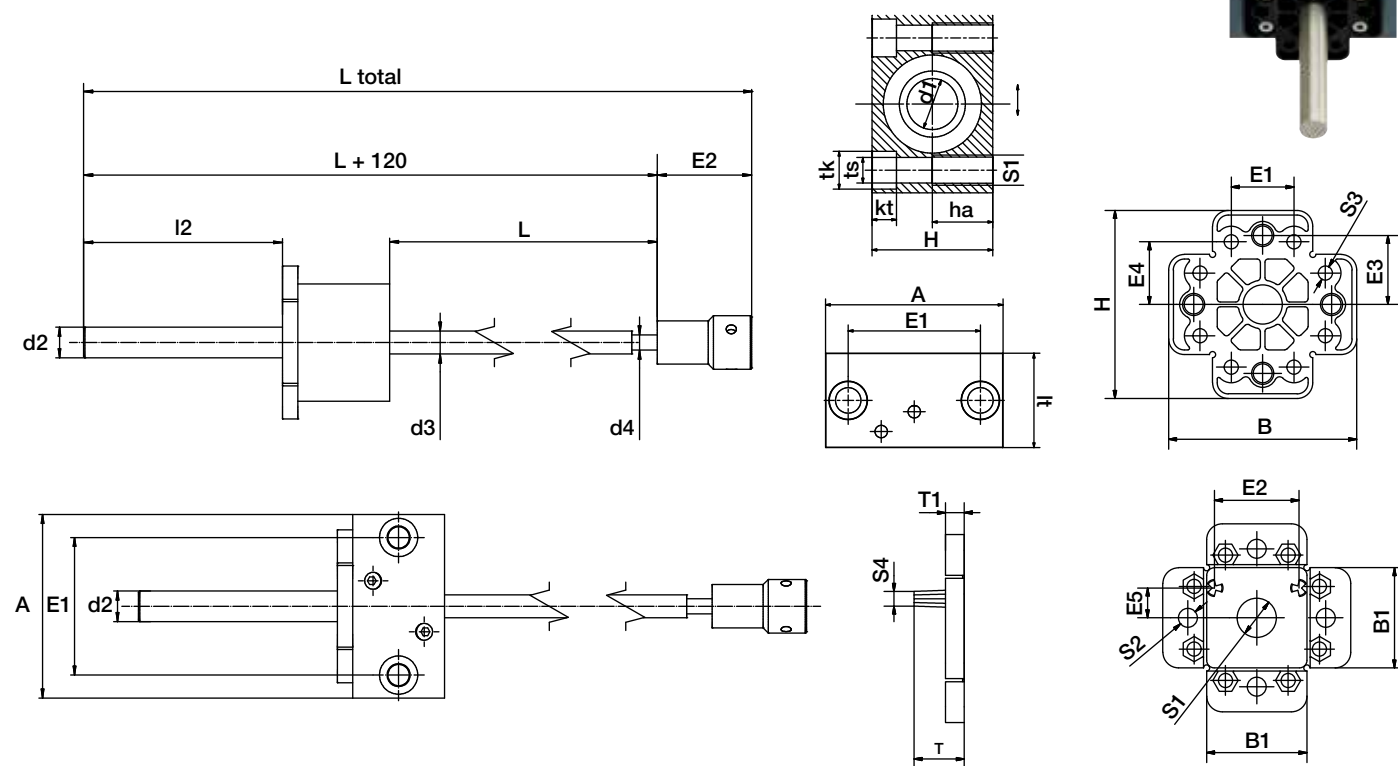
With the Remote Operation Unit, hazards such as chemicals or heat can be avoided. Thanks to the flexshaft, they can also be easily manipulated.

- Use e.g. of chemicals, heat, places that are hazardous for people working in them
- Enables manual remote control of linear modules
- Ergonomic operation via flexshaft
- Safe control of linear modules outside the work area
- Available with flexshaft with Ø 6 and 8mm in different lengths
- Thanks to the adapter plate, position indicators as well as lead screw
- clamps can be fitted in 4 operating directions (0°, 90°, 180°, 270°)
- Reduction sleeves for quick and simple connection to lead screw size Ø 8/10/12 available AK-0047 (Ø 14->8mm); AK-0048 (Ø 14->10mm), AK-0049 (Ø 14->12mm)



Typical application areas:

- Format adjustment
- Cabin construction
- Hazard areas



Dimensions [mm]

Part No.	L	L Total	l2	d2	d3	d4	E1	E2	E3	E4	S3	H
SHT-ROU-06-300	300	457	78	12	9	6	20	37	22	20	4.5	60
SHT-ROU-06-500	500	657	78	12	9	6	20	37	22	20	4.5	60
SHT-ROU-08-500	500	657	78	12	11	8	20	37	22	20	4.5	60
SHT-ROU-08-1000	1,000	1157	78	12	11	8	20	37	22	20	4.5	60

Part No.	B	T1	A	E5	lt	tk	ts	kt	ha	S1	d1
SHT-ROU-06-300	60	6	72	54	36	15	9	8.6	23	M10	14H7
SHT-ROU-06-500	60	6	72	54	36	15	9	8.6	23	M11	14H7
SHT-ROU-08-500	60	6	72	54	36	15	9	8.6	23	M12	14H7
SHT-ROU-08-1000	60	6	72	54	36	15	9	8.6	23	M13	14H7